



# I BEAM LIGHT

Modular Optics



# A Choice of Design Aesthetic

01

## Transparent Optics

The unique design makes it semi-transparent luminaire when off, excellent uniformity and efficiency when on.



ON- Uniform



OFF - Semi-transparent optics

02

## Vertical Modern Design

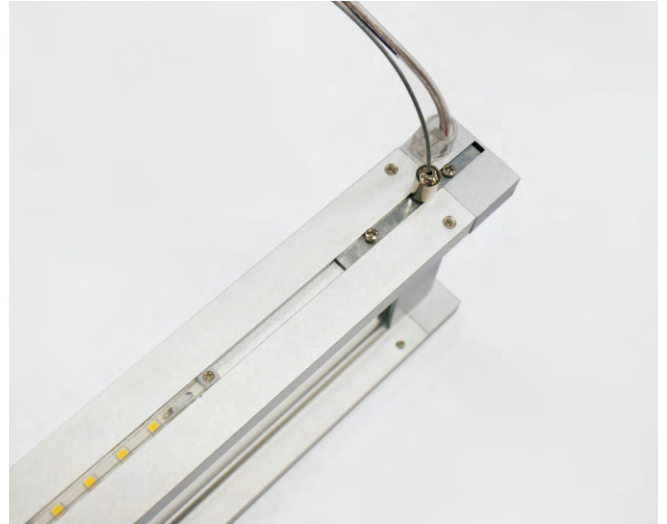
Timeless and minimalist design complements any interior architectural atmosphere





## 03 Square canopy

Unique canopy power supply works for all types of junction boxes

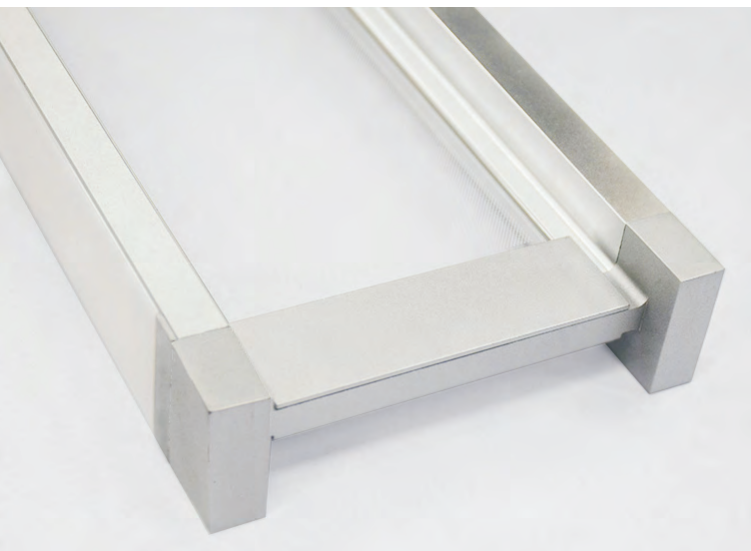


## Premium Quality

01

### Advanced Optics With Delicate Laser Dot

The ultra-thin semi-transparent optical light guide plate highly transmits the flux of LEDs and evenly deliver the lights at the horizontal sides.



02

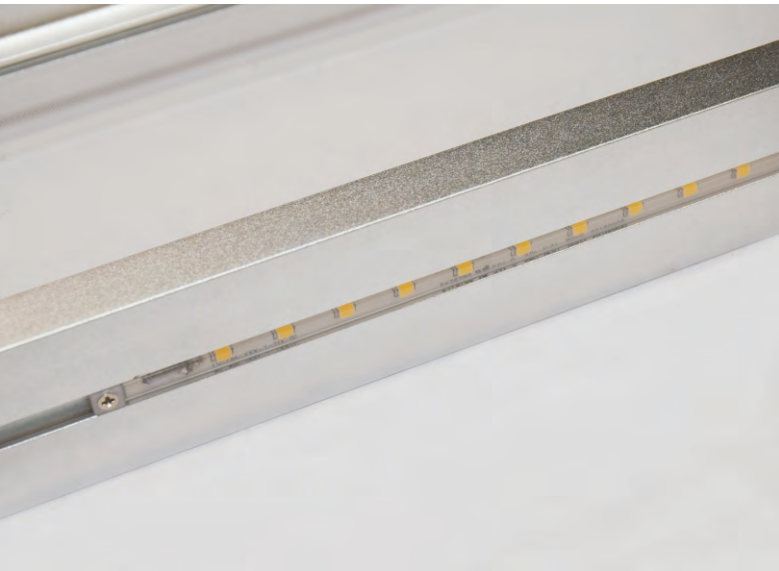
### High Quality Aluminum Housing

Made from extruded aluminum housing with die cast aluminum end caps. Powder coat silver is standard.

03

## High Light Transmittance Diffuser Cover

Adopt high quality PC material reaching >80 light transmittance, make the light equable and soft, no glaring and eye-protected.



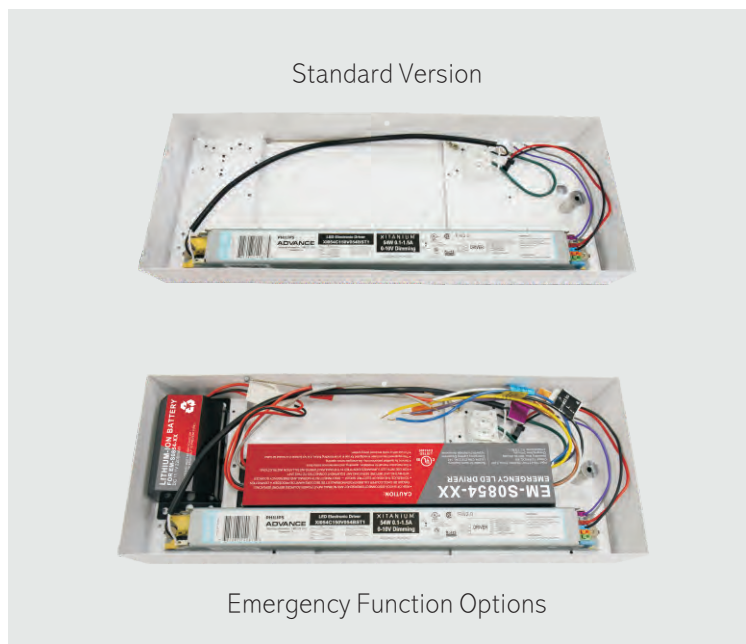
04

## Indirect light distributions above the fixture.

05

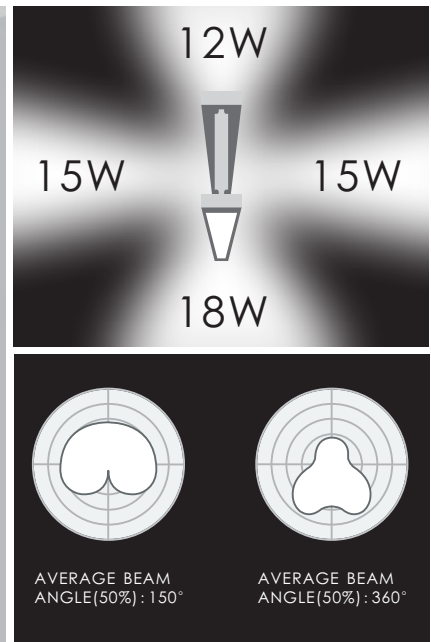
## Isolated And Class 2 Output LED Driver

The constant current driver with universal voltage 100-277V is housed in a ceiling canopy. One remote driver encloses per unit. 0-10V dimming is the standard.



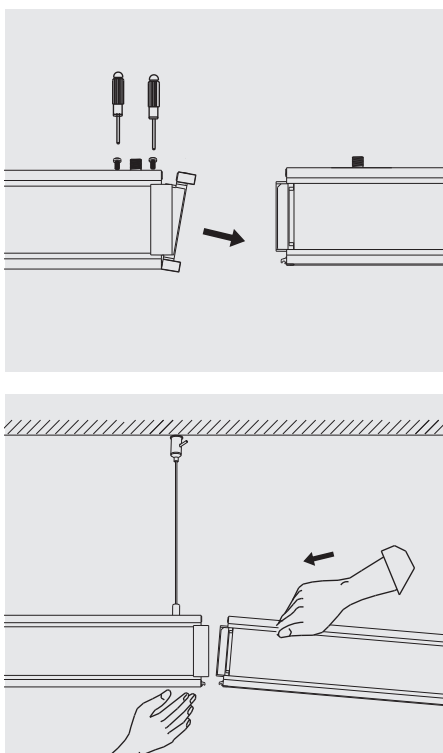
# Superior Performances

## 1. Direct And Indirect Light



I beam light with diffusing cover is precisely controlled optimal direct indirect light distributions between the direct surfaces below and the ambient area above the fixture.

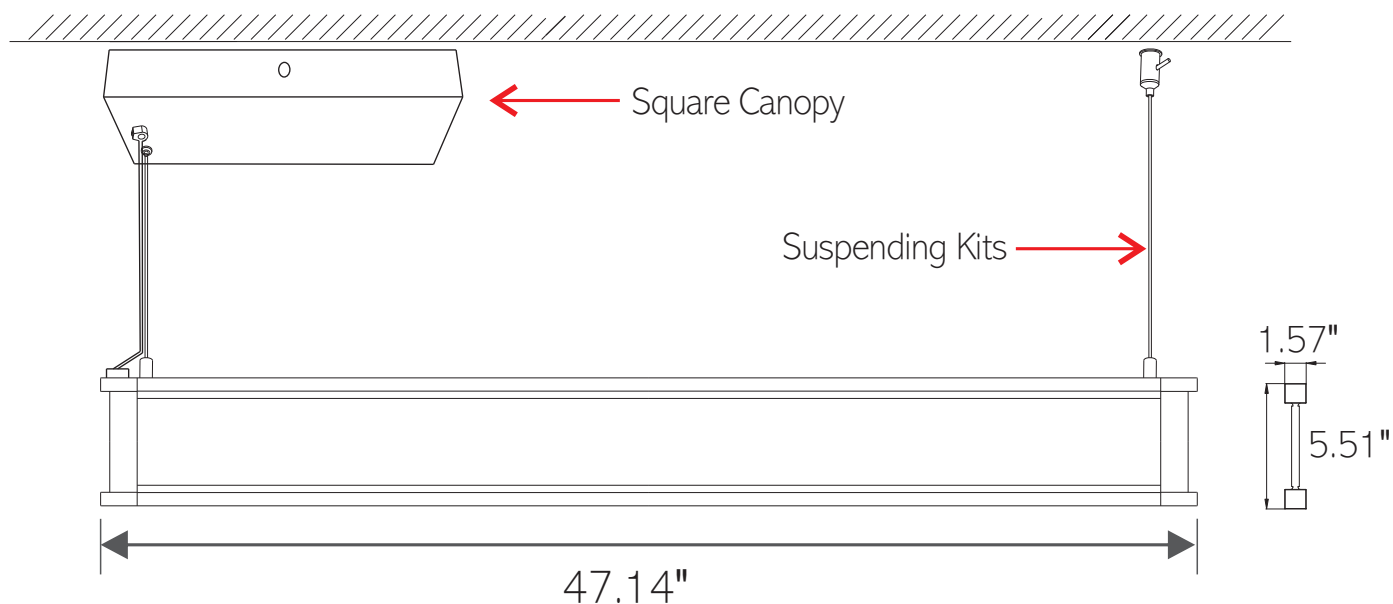
## 2. Seamless Continuous Runs



This engineered luminaire joining design allows for simple and intuitive assembly in the field easily. It is junction plate act as connector and ensure that luminaire rows snap into a laser straight line.

# Details

## Product Dimensions



## Performance Summary(LV4-DM-XXX)

Input Power

60Watts

Efficacy

110LPW

CRI

Ra>80

THD

<20%

Power Factor

>0.9

Standard Warranty

5 Years

Mounting

Suspended

Accessories

Square Canopy with suspending kits

Delivered Light Output

6600Lumens

DLC CCT Options

3500K/4000K/5000K

Input Voltage

100-277V AC

Light Distribution

Direct indirect light distributions between the direct surfaces below and the ambient area

Input current

1.3 A

Standard Lifetime

Designed to L70 minimum 50,000 hours

Dimming

0-10V Dimming (10%~100%)

Certificate

ETL, DLC Listed With Damp Rated





①



②



③



④



⑤



⑥



⑦

## Accessory

1. Surface Mount Plate 1PC
2. Square Canopy With Driver 1PC
3. Tapping Screw 2PCS
4. Mechanical Screw 4PCS
5. Terminals 5PCS
6. 1.5M Suspension Rope 1PC
7. Cable Ties 4PCS

## Applications









