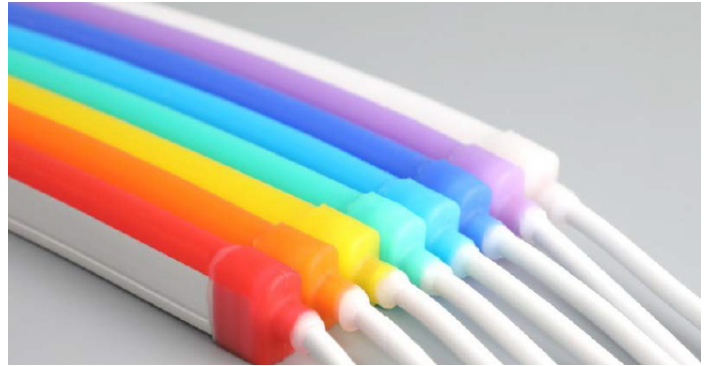
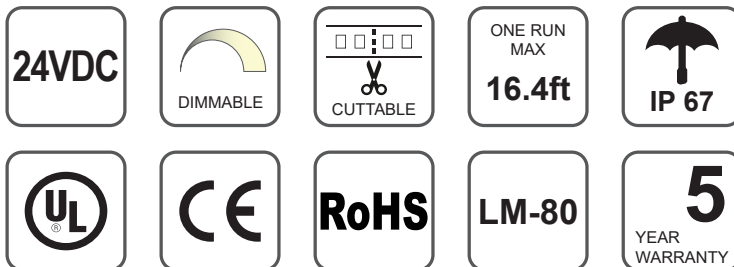


# LED Side Bend Neon -- WINT Series



## Features

- Any length cuttable, super flexible bend with dome profile, provides brilliant outlines from both front and side directions.
- Uniform, dot-free, smooth and comfortable luminary up to 16.4ft (5m) run length.
- IP67 with endcap sealed by glue, for indoor or outdoor usage.
- Dimmable available with PWM, Forward phase, Triac, 0-10V, MLV, ELV.
- Soft bend flexibility, strong impact resistant and high weather resistance.
- 50,000h long lifespan, 5 years warranty, for indoor usage. 36,000h long lifespan, 3 years warranty, for outdoor usage.
- UL, CE, RoHS approval.



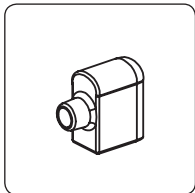
## Models

Model No.	Color	Brightness	IP Rating	CRI	Length
GL-WINT-2835CVAW-14	6500K (White Jacket)	127.6 lm/ft	IP67	80+	16.4ft/32.8ft
GL-WINT-2835CVAR-14	Red (Red Jacket)	24.2 lm/ft	IP67	/	16.4ft/32.8ft
GL-WINT-2835CVAB-14	Blue (Blue Jacket)	3.5 lm/ft	IP67	/	16.4ft/32.8ft
GL-WINT-2835CVAW-14(B)	Blue (White Jacket)	16.3 lm/ft	IP67	/	16.4ft/32.8ft
GL-WINT-2835CVFM-14	RGB (White Jacket)	35.8 lm/ft	IP67	/	16.4ft/32.8ft

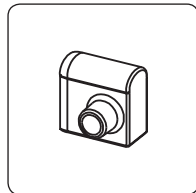
## Specification

<b>Input Voltage</b>	24VDC
<b>Dimmable</b>	PWM, Forward phase, Triac, 0-10V, MLV, ELV
<b>Transformer</b>	Constant Voltage Transformer
<b>Wire Size</b>	20 AWG, 2 wires/4 wires, 24inches (600mm)
<b>Color Temperature (CCT)</b>	6500K, Red, Blue, RGB
<b>Power Consumption</b>	4.4W/ft
<b>Maximum Run Length</b>	16.4 ft
<b>LED Chip</b>	2835/4040
<b>Field Cuttable</b>	Free cut to be any length
<b>Dimensions</b>	0.28" (7mm) x 0.59" (15mm)
<b>Operating Temperature</b>	-4°F (-20°C)~ 113°F (45°C)
<b>Mounting</b>	Surface Mount with Bracket/Channel/Bendable Bracket
<b>Certification</b>	UL listed for wet location
<b>Lumen Maintenance</b>	50,000 hrs (indoor) / 36,000 hrs (outdoor)
<b>Warranty</b>	5 years (indoor) / 3 years (outdoor)

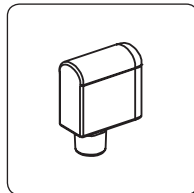
## Accessories



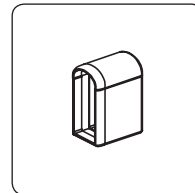
**Rear Feed End Cap**  
GL-WINT-RFEC



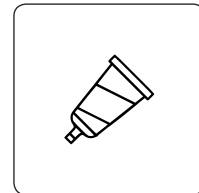
**Side Feed End Cap**  
GL-WINT-SFEC



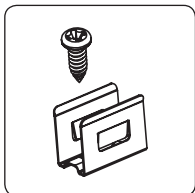
**Bottom End Cap**  
GL-WINT-BTEC



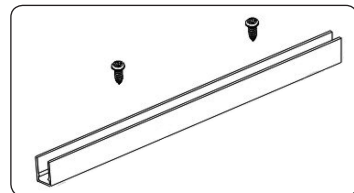
**End Cap**  
GL-WINT-EC



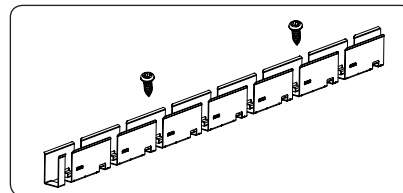
**Silicone Glue**  
GL-WINT-SGL



**Bracket**  
GL-WINT-MB

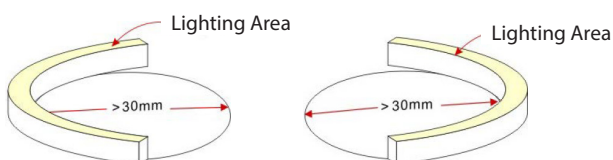


**Aluminum Channel** 3.2ft  
GL-WINT-AL



**Bendable Bracket** 16.4ft  
GL-WINT-BDMB

## Note



Min. bending diameter is 1.18in.(30mm)



Max. twist angle is 360° per 11.8in.(0.3m)

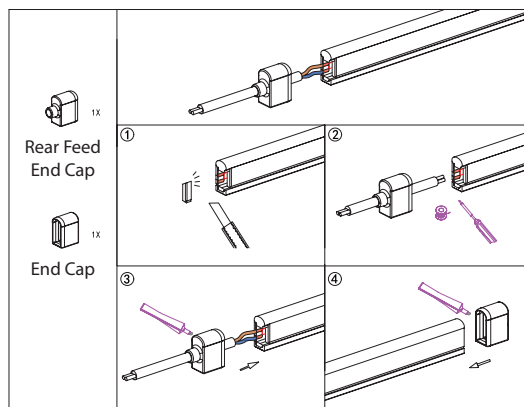
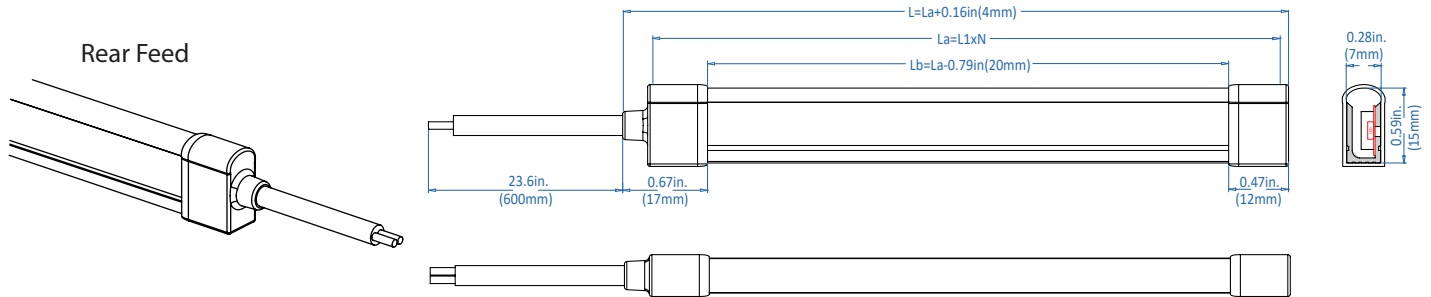


Can't be top-bend

### Installation & Size

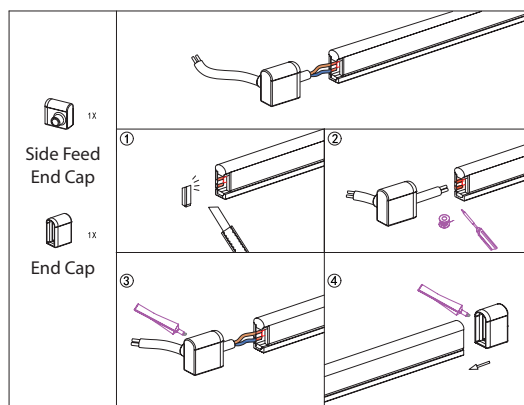
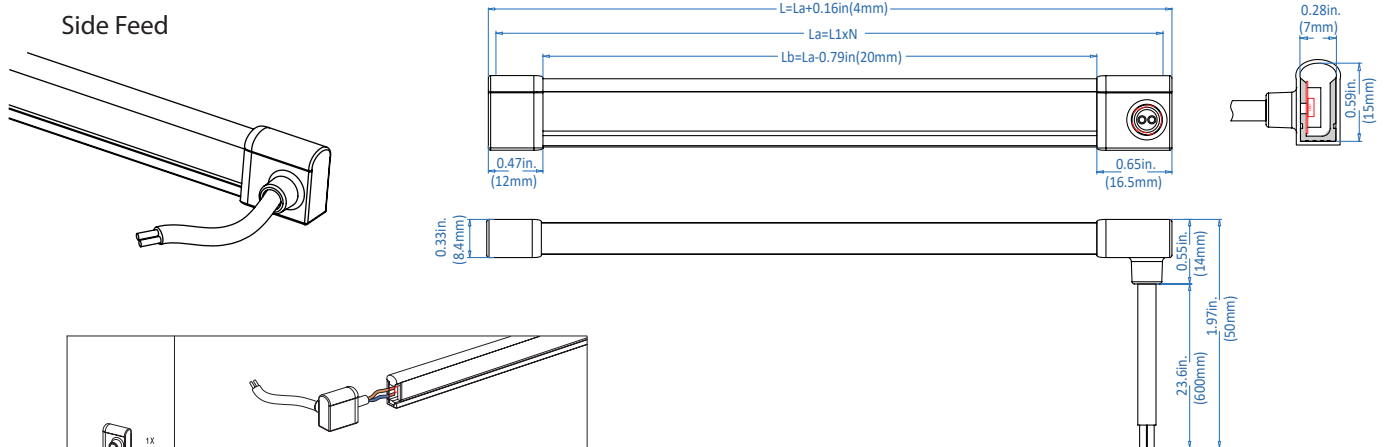
#### Power Cable in Rear Feed

L: Total Length  
La: Max. Strip Length  
Lb: Light Emitting Area Length  
L1: Min. Length  
N: Quantity in 1, 2, 3.....



- ① Peel off some part of silicone in 0.12in.(3mm) to bare the bottom solder pad.
- ② Solder the cable to the bottom solder pad.
- ③ ④ Fill the end caps with silicone gule and then seal to the strip body.

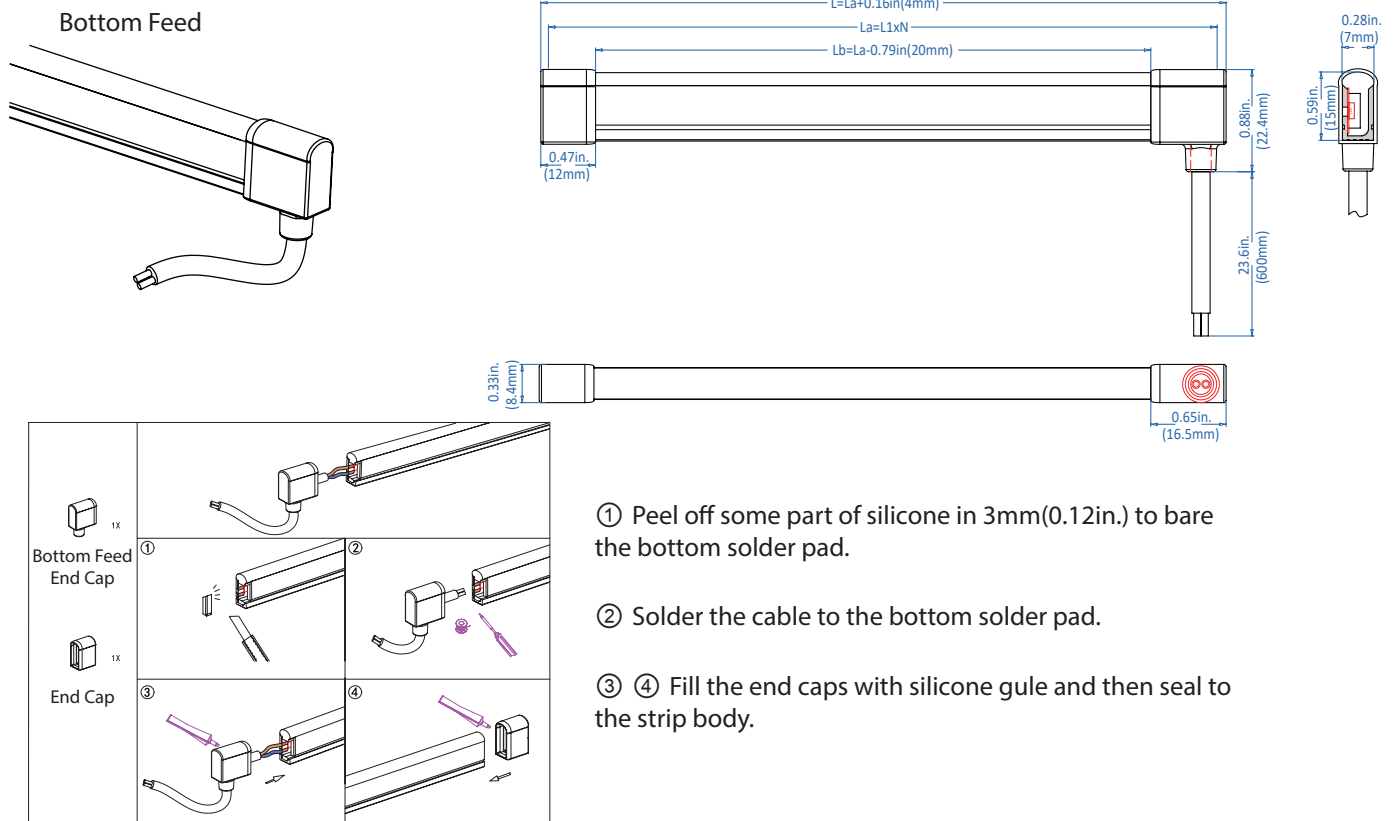
#### Power Cable in Side Feed



- ① Peel off some part of silicone in 3mm(0.12in.) to bare the bottom solder pad.
- ② Solder the cable to the bottom solder pad.
- ③ ④ Fill the end caps with silicone gule and then seal to the strip body.

### Installation & Size

#### Power Cable in Bottom Feed



### Accessories

